

Silhouette Wood Laboratory Furniture



Section Contents

Casework Styles.....	42
Laboratory Bench Assemblies.....	44
Octagonal All-Science Tables.....	45
Perimeter Student Tables.....	46
Service Benches.....	47
Tall Storage Cases.....	48
Instructor's Benches.....	49
Sitting Height Base Cabinets.....	50
Standing Height Base Cabinets.....	51
Wall Mounted Storage Cabinets.....	52

SilhouetteWood Laboratory Furniture

The Silhouette style of wood furniture offers a sophisticated, European-contemporary design with radiused edge door and drawer fronts. An integral recessed pull is machined into the solid hardwood panels.

Silhouette furniture is constructed of high quality Appalachian hardwoods and veneers. See page 43 for construction details.

Rediship

Some of our Silhouette furniture is available for fast delivery from stock. Ask your furniture representative for details.

Silhouette Wood Furniture



The Silhouette Style

The Silhouette Style of wood furniture offers a sophisticated, European-contemporary design with radiused edge door and drawer fronts. An integral, recessed pull is machined into the solid hardwood panels, creating a practical and interesting alternative to pull handles.

Silhouette laboratory furniture meets today's quality and value standards. All surfaces are finished with a chemical-resistant synthetic varnish system. The coating withstands reagents and is heat, moisture, and impact-resistant. Stain color: Fawn Oak.

The Silhouette Style wood laboratory furniture has all the components necessary for a complete laboratory set-up: base cabinets, special-use cabinets, wall storage units, trim parts, and extra shelves.

All wood laboratory furniture is constructed of Appalachian red oak. This premium wood meets the highest standards for wood casework construction and is available in a variety of beautiful, acid-resistant finishes.

Contact your Furniture Specialist for information on other casework woods and samples of the various finishes available.



Contemporary Style

- Square-edged, full overlay door and drawer fronts
- Different finishes and decorative pulls add style
- Practical for any classroom or laboratory
- Available in Oak or White Maple



Conventional Radius Lip Style

- Understated design
- Traditionally styled radius lip door and drawer fronts
- Radiused edges of the fronts partially overlay the solid hardwood case edges
- Available in Oak or White Maple



Full Radius Edge Style

- Full radiused edge
- Semi-overlay door and drawer panels
- Contoured edges add style and textural interest
- Available in Oak

Also available as factory order.

Silhouette Wood Furniture

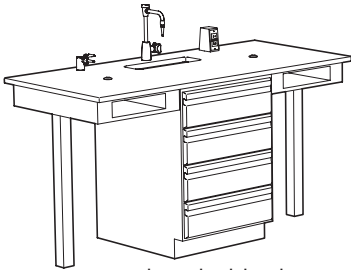
Silhouette Style Construction

The Silhouette European-contemporary design creates a practical and interesting alternative to standard classroom and laboratory furniture.



Single-Sided Student Bench Assemblies

Student benches can be either free-standing tables or single-sided for wall mounting. They allow capacities of up to 16 student s. Multiple bench assemblies may be installed on a single wall. All bench assemblies include 1" thick solid epoxy work surface, epoxy sink(s), each with one cold water faucet, electrical outlet(s), gas cock(s) and rod sockets. Select base cabinets for the subject being taught in the laboratory. Configurations shown here can be customized with any base cabinet shown below. Assemblies do not include electrical or plumbing connections. Products on this page are made to order, shipped fully KD, and are designed for installed projects.



Two Student Single-Sided Bench

KST40H36 9 3 3

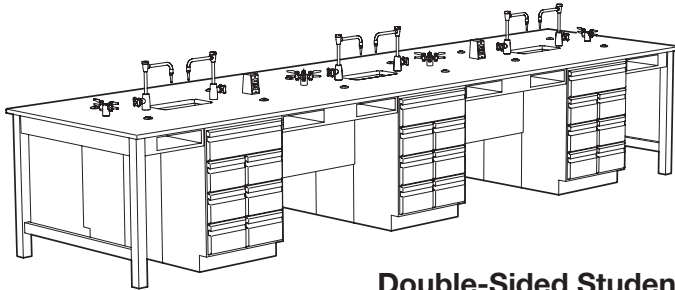
Single-Sided Student Benches

Number of Students	Overall Size (L x D x H)	Sinks	Gas Cocks	Electrical Fittings	Cat. No.
2	66" x 30" x 35 ³ / ₄ "	1	1	1	KST40H36 <input type="checkbox"/> <input type="checkbox"/> 3*
4	129" x 30" x 35 ³ / ₄ "	2	3	2	KST48H36 <input type="checkbox"/> <input type="checkbox"/> 3*
6	192" x 30" x 35 ³ / ₄ "	3	4	2	KST43H36 <input type="checkbox"/> <input type="checkbox"/> 3*
8	254" x 30" x 35 ³ / ₄ "	4	5	3	KST49H36 <input type="checkbox"/> <input type="checkbox"/> 3*

* See Optional Base Cabinets below for the necessary 2 digit code to complete the assembly catalog number .

Double-Sided Student Bench Assemblies

Double-sided student benches include all necessary materials except electrical wiring and plumbing connections. Assemblies include 1" thick solid epoxy work surface, epoxy sink(s) each with two cold water faucets, electrical outlet(s) and gas cock(s). Select base cabinets from the list below to customize the laboratory for the subject being taught.



12 Student Double-Sided Bench

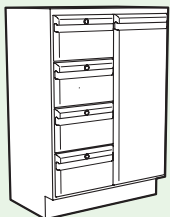
KST82H36 9 5 3

* See Optional Base Cabinets below for the necessary 2-digit code to complete the assembly catalog number.

Double-Sided Student Benches

Number of Students	Overall Size (L x D x H)	Sinks	Gas Cocks	Electrical Fittings	Cat. No.
4	66" x 49" x 35 ³ / ₄ "	1	1	1	KST80H36 <input type="checkbox"/> <input type="checkbox"/> 3*
8	129" x 49" x 35 ³ / ₄ "	2	3	2	KST81H36 <input type="checkbox"/> <input type="checkbox"/> 3*
12	192" x 49" x 35 ³ / ₄ "	3	4	2	KST82H36 <input type="checkbox"/> <input type="checkbox"/> 3*
16	254" x 49" x 35 ³ / ₄ "	4	5	3	KST83H36 <input type="checkbox"/> <input type="checkbox"/> 3*

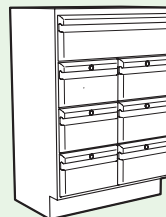
Base Cabinet Options — Insert the 2-Digit Codes to the Above Assembly Catalog Numbers



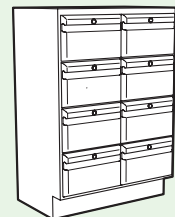
Two-Digit Code 9 0



Two-Digit Code 9 3



Two-Digit Code 9 5

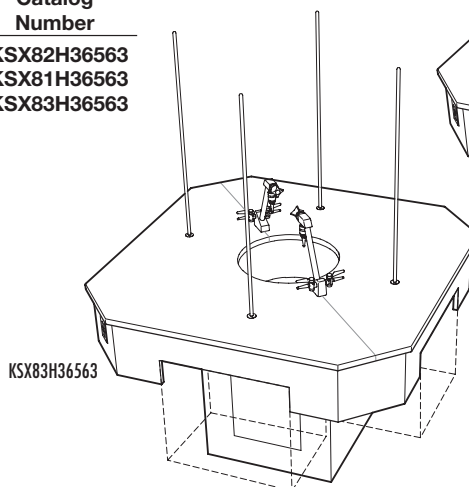
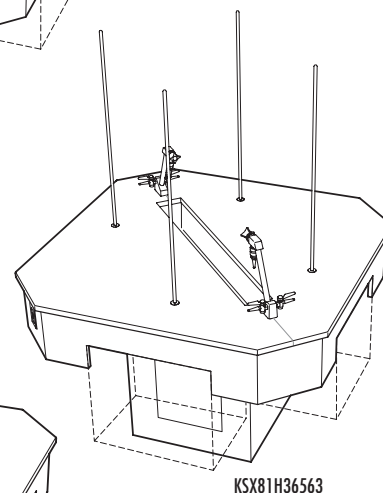
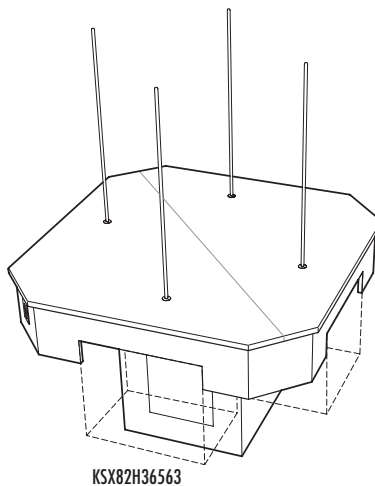


Two-Digit Code 9 6

Octagonal Science Workstations

Octagonal assemblies provide greater flexibility over Peninsula workstations and free-standing tables, as instructors have better access to individual students with these tables. Islands can be installed as free-standing units or they can be connected to student tables to form extended work areas. Products on this page are made to order, shipped fully KD, and are designed for installed projects.

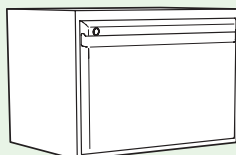
- Overall Size:** 55½" L x 55½" D x 35¾" H
- Work Surface:** 1" Thick Solid Epoxy Resin
55½" x 55½"
(66½" x 66½"
diagonal measurement)
- Cabinets:** Optional — See below
- Electric Fixtures:** 120VAC GFI Duplex Receptacles
- Sink:** Trough Sink — 48" L x 6" W x 5" D
Round Sink — 18" Dia. x 18" H
- Service Fittings:** (2) — Combination Water and Gas
- Fittings:** (4) — Rod Sockets
(4) — Upright Rods



Sink Type	Water/Gas Fittings	Electrical Fittings	Catalog Number
None	None	2	KSX82H36563
Trough	2	2	KSX81H36563
Round	2	2	KSX83H36563

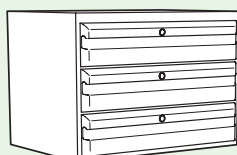
Optional Base Cabinets — Order Separately

Cupboard Cabinet



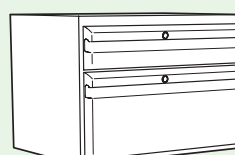
KSC03H15213

3 Drawer Cabinet



KSD00H15213

2 Drawer Cabinet



KSD03H15213

6 Drawer Cabinet



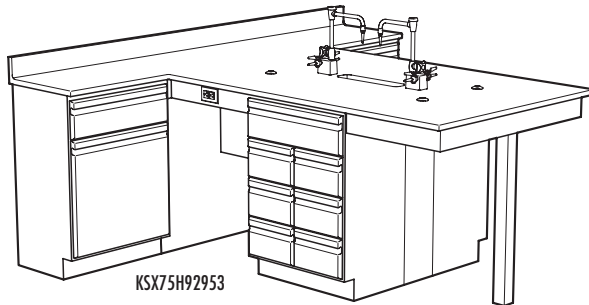
KSD02H15213

Cabinet sizes are 21" L x 15" D x 15" H

Call us at 800-727-4368

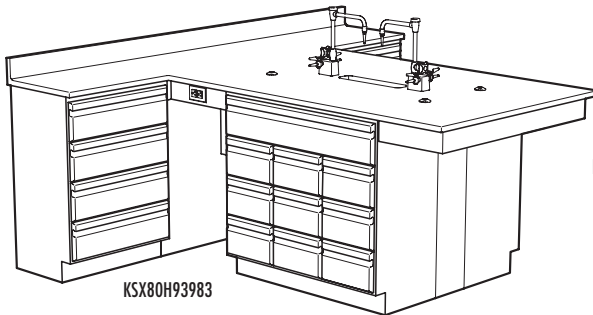
Perimeter Student Tables

Perimeter Student Tables are ideally suited for the teaching laboratory. You simply select the exact combination of storage space you need. Each Perimeter Student Table is furnished with a 1" epoxy resin worktop with a 4"-high curb, filler panels, scribe strips, sink supports, base molding, and molding corner guards. Any combination of cabinets shown below may be used. Products on this page are made to order, shipped fully KD, and are designed for installed projects.



KSX75H92953

KSX75H Shown with **9 2** at wall and **9 6** under the peninsula.



KSX80H93983

KSX80H Shown with **9 3** at wall and **9 8** under the peninsula.

Overall Size: 90" L x 84" W x 35 $\frac{3}{4}$ " H
Worktop Surface: 1" Epoxy Resin with 4" H curb
Worktop Size: Wall Bench — 18" x 90";
 Peninsula — 42" x 66"

KSX75H Cabinets: 2 pair — 24" L x 16" D x 34 $\frac{3}{4}$ " H

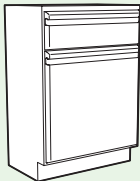
KSX80H Cabinets: 1 pair — 24" L x 16" D x 34 $\frac{3}{4}$ " H
 1 pair — 36" L x 16" D x 34 $\frac{3}{4}$ " H

Sink: (1) — 18" L x 6 $\frac{1}{2}$ " W x 6" H
 (1) — 1 $\frac{1}{2}$ " I.P.S. Sink Outlet

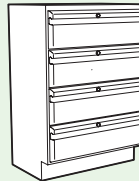
Fittings: (2) — 120 VAC GFI Duplex Receptacle
 (2) — Combination Water Faucet and Gas Cock
 (4) — Rod Sockets

No service piping or electric conduit included.

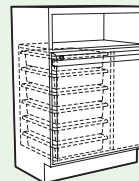
Base Cabinet Options — Insert the 2-Digit Codes to the Above Assembly Catalog Numbers



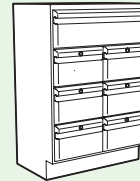
24"L
Two-Digit Code **9 2**



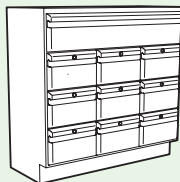
24"L
Two-Digit Code **9 3**



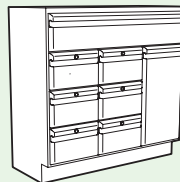
24"L
Two-Digit Code **9 4**



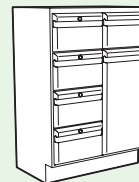
24"L
Two-Digit Code **9 5**



36"L
Two-Digit Code **9 8**



36"L
Two-Digit Code **9 7**



24"L
Two-Digit Code **9 9**



24"L
Two-Digit Code **9 6**

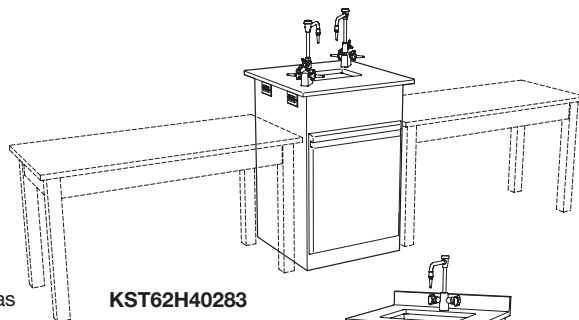
Wall and Island Service Benches

Wall and Island Service Benches, when used with moveable student tables, allow flexibility in placement of tables while allowing easy access to electricity and water provided in the service benches. Each Service Bench includes a sink and fittings. No service piping or electrical hookups are provided. Products on this page are made to order, shipped fully KD, and are designed for installed projects.

Island Service Bench

KST62H40283

- Overall Dimensions:** 27½" L x 27½" D x 35¾" H
- Work Surface:** 1" Epoxy Resin
- Cabinet:** 24" L x 24" D x 38¾" H
- Sink:** Epoxy, 6" D x 10" W x 14" L (I.D.)
- Electric Fixtures:** (4)–120VAC GFI Duplex Receptacle
- Fittings:** (2)–Combination Hot/Cold Water and Gas

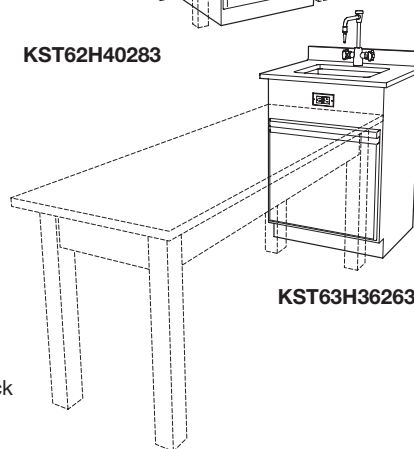


KST62H40283

Wall Service Bench

KST63H36263

- Overall Dimensions:** 26" L x 24" D x 35¾" H
- Work Surface:** 1" Epoxy Resin
- Cabinet:** Sink Cabinet with Door
- Sink:** Epoxy, 11" D x 15" W x 18" L (I.D.)
- Electric Fixture:** (1)–120VAC GFI Duplex Receptacle
- Fittings:** (2)–Combination Hot/Cold Water w/VB Gooseneck



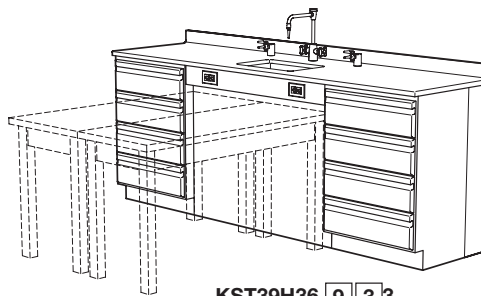
KST63H36263

Wall Service Bench (2 Tables)

To specify base cabinets, insert the cabinet's two-digit code below into the assembly catalog number.

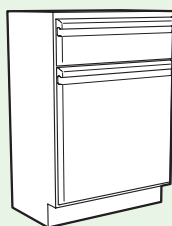
KST39H36 3

- Overall Dimensions:** 90" L x 24" D x 35¾" H
- Work Surface:** 1" Epoxy Resin
- Cabinet:** (2)–24" L x 16" D x 34¾" H (see below for choices)
- Sink:** Epoxy, 8" D x 12" W x 16" L (I.D.)
- Electric Fixtures:** (2)–120VAC GFI Duplex Receptacles
- Fittings:** (1)–Combination Hot/Cold Water w/VB Gooseneck
(2)–Single Outlet Service Fitting



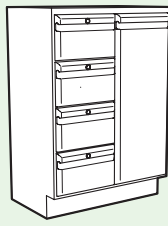
KST39H36 3

Optional Base Cabinets (Nominal 16" Depth)



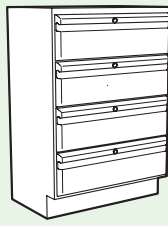
Two-Digit Code

2



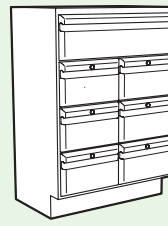
Two-Digit Code

0



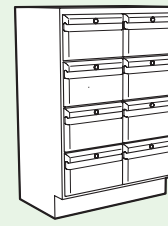
Two-Digit Code

3



Two-Digit Code

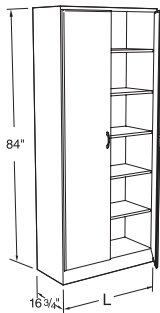
5



Two-Digit Code

6

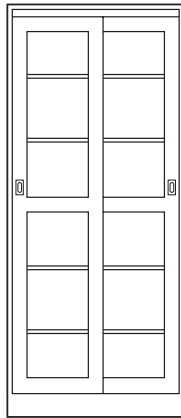
Silhouette Full Height Storage Cabinets



Products on this page are made to order, shipped fully KD, and are designed for installed projects.

- Standing height storage cabinets are 84" high and 16³/₄" deep. Length as shown
- Supplied with four adjustable shelves and one fixed shelf
- Other sizes available. Consult your furniture representative for a full list
- Stain color is Fawn Oak
- Locks available as an option

Sliding Glazed Doors



(L x D x H)

KSS11H16363 36" x 16" x 84"
KSS11H16483 36" x 16" x 84"

Open Storage



(L x D x H)

KSS00H16363 36" x 16" x 84"
KSS00H16483 36" x 16" x 84"

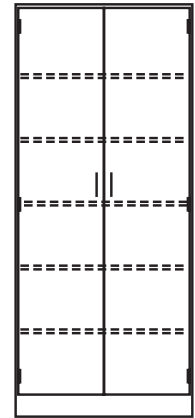
Swinging Glazed Door



(L x D x H)

KSS20H16363 36" x 16" x 84"
KSS20H16483 36" x 16" x 84"

Swinging Panel Door



(L x D x H)

KSS25H16363 36" x 16" x 84"
KSS25H16483 36" x 16" x 84"

Microscope Storage Cabinets

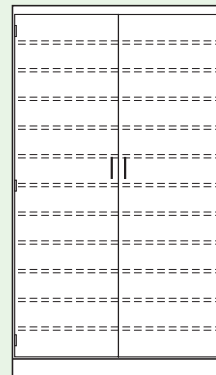


KSS21H16363

- All shelves (except center) and vertical partitions are adjustable
- Locks available as an option
- Stain color is Fawn Oak

Microscope Capacity	Length	Catalog Number
15	24"	KSS21H16243
20	36"	KSS21H16363
30	48"	KSS21H16483

Tote Tray Cabinets



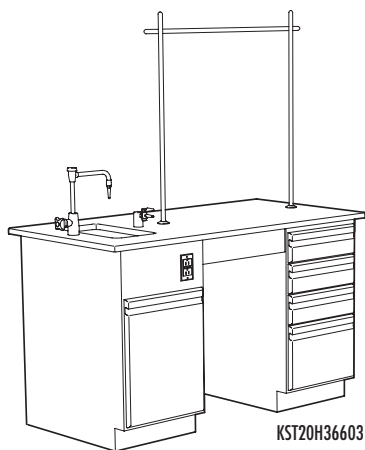
VFS64-H2248

- Tote tray cabinets are 22" deep and 84" high. Lengths as shown
- 36" L cabinets hold 36 tote trays
- 48" L cabinets hold 48 tote trays
- All cabinets provided with one fixed shelf and 10 adjustable shelves
- Locks available as an option
- Stain color is Fawn Oak
- Tote trays sold separately

Door Type	36" L	48" L
Solid Sliding Door	KSS62H22363	KSS62H22483
Solid Swinging Door	KSS64H22363	KSS64H22483
Tote Trays	WLG9900	WLG9900

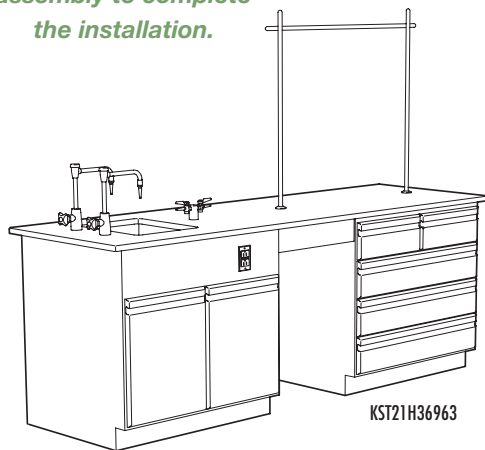
Instructor's Demonstration Benches

These benches provide the required space to conduct effective table top demonstrations. The benches are available in two sizes and with either right or left hand configurations. Both have cupboard and drawer storage areas, a 1" black epoxy resin worktop and a sink. Each bench also includes fittings, fixtures, rod sockets, upright rod assembly, finished back, knee space filler panel, base molding and molding corner guards. Also available with flat tops. Please call for ordering assistance. Products on this page are made to order, shipped fully KD, and are designed for installed projects.



KST20H36603

Add an instructor's desk assembly to complete the installation.



KST21H36963

60" Instructor's Demonstration Bench

KST20H36603 Sink on Right
KST30H36603 Sink on Left

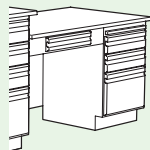
- Overall Size:** 60" L x 30" D x 35 3/4" H
- Worktop Surface:** 1" Epoxy Resin
- Worktop Size:** 60" x 30"
- Cabinets:** (1)–Sink Cabinet, 18" L
(1)–Four-Drawer Cabinet, 18" L
- Sink:** (1)–Epoxy Tub Sink; 6" H x 14" L x 10" W
(1)–1-1/2" I.P.S. Sink Outlet
- Electrical Fixtures:** (1)–120 VAC GFI Duplex Receptacle
- Fittings:** (1)–Cold Water VB Gooseneck Faucet
(1)–Single Outlet Service Fitting
(2)–Rod Sockets
(1)–Upright Rod Assembly

96" Instructor's Demonstration Bench

KST21H36963 Sink on Right
KST31H36963 Sink on Left

- Overall Size:** 96" L x 30" D x 35 3/4" H
- Worktop Surface:** 1" Epoxy Resin
- Worktop Size:** 96" x 30"
- Cabinets:** (1)–Sink Cabinet, 36" L
(1)–Five-Drawer Cabinet, 36" L
- Sink:** (1)–Epoxy Tub Sink; 11" H x 18" L x 15" W
(1)–1-1/2" I.P.S. Sink Outlet
- Electrical Fixtures:** (1)–120 VAC GFI Duplex Receptacle
- Fittings:** (2)–Cold Water VB Gooseneck Faucets
(1)–Double Outlet Service Fitting
(2)–Rod Sockets
(1)–Upright Rod Assembly

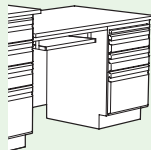
Instructor's Desk Assembly with Drawer



KST24H3048R3 Right Side
KST34H3048R3 Left Side

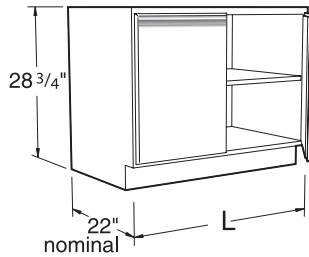
- Overall Size:** 48" L x 30" D x 28 3/4" H
- Worktop Surface:** 1" Solid Epoxy Resin
- Cabinets:** (1) Three-Drawer Cabinet with Pull-out Writing Board
(1) Apron with Drawer
(1) Book Shelf —
47" L x 6" D x 24 3/4" H

Instructor's Desk Assembly with Keyboard Tray



KST25H3048R3 Right Side
KST35H3048R3 Left Side

- Overall Size:** 48" L x 30" D x 28 3/4" H
- Worktop Surface:** 1" Solid Epoxy Resin
- Cabinets:** (1) Three-Drawer Cabinet with Pull-out Writing Board
(1) Keyboard Tray–29" L
(1) Book Shelf —
47" L x 6" D x 24 3/4" H



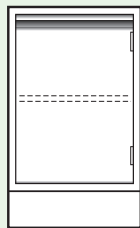
Silhouette Sitting Height Base Cabinets

Products on this page are made to order, shipped fully KD, and are designed for installed projects.

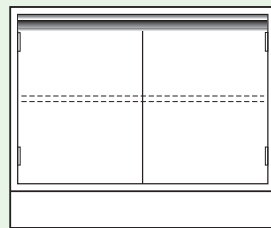
Specifications:

- All Sitting Height Cabinets are 28³/₄" high and a nominal 22" deep. Lengths as shown.
- Cupboards have one adjustable shelf.
- Open Cabinets have one adjustable shelf.
- Not all available cabinets are shown. Consult your Furniture Representative for a full list.
- Stain color is Fawn Oak.

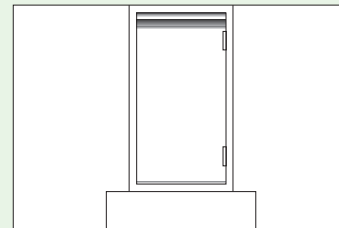
Cupboard Cabinets



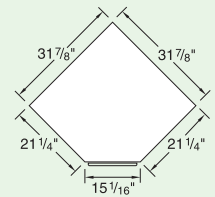
KSC03H30183 18"L
KSC03H30243 24"L



KSC03H30363 36"L

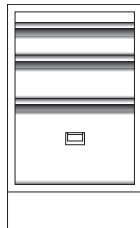


KSG14H30153



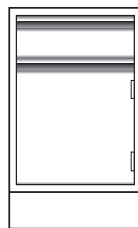
Corner Cabinet
Dimensions

Drawer Cabinets

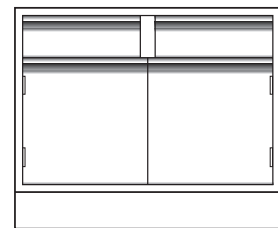


Pull out shelf,
1 card file,
1 file drawer
with hangars

KSD90H30183 18"L



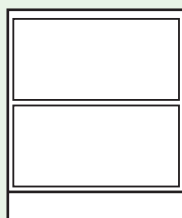
KSE40H30183 18"L
KSE40H30243 24"L



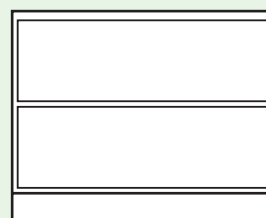
KSE41H30363 36"L

Cupboard and Drawer Cabinets

Open Storage Cabinets Sitting Height

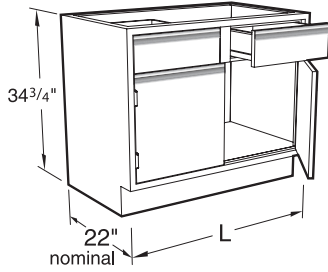


KSB00H30183 18"L
KSB00H30243 24"L



KSB00H30303 30"L
KSB00H30363 36"L
KSB00H30483 48"L

Silhouette Standing Height Base Cabinets

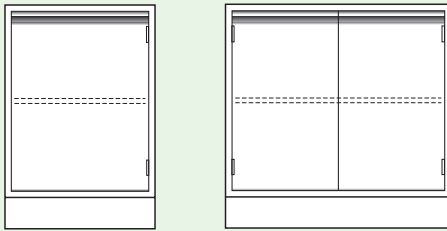


Products on this page are made to order, shipped fully KD, and are designed for installed projects.

Specifications:

- All Standing Height Cabinets are 34³/₄" high and a nominal 22" deep. Lengths as shown.
- Cupboards have one adjustable shelf.
- Open Cabinets have two adjustable shelves.
- Not all available cabinets are shown. Consult your Furniture Representative for a full list.
- Stain color is Fawn Oak.

Cupboard Cabinets



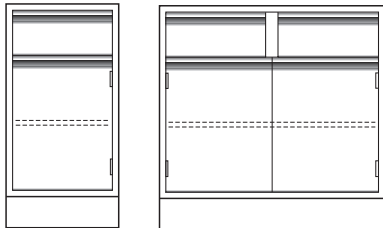
- | | | | |
|--------------------|------|--------------------|------|
| KSC03H36183 | 18"L | KSC03H36363 | 36"L |
| KSC03H36243 | 24"L | KSC03H36483 | 48"L |

Drawer Cabinets



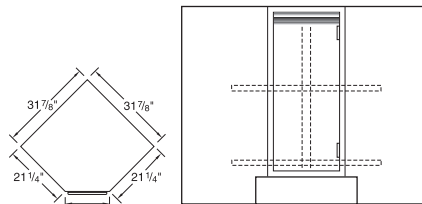
- | | | | |
|--------------------|------|--------------------|--------------------|
| KSD30H36183 | 18"L | KSD31H36363 | KSD31H36363 |
| KSD30H36243 | 24"L | | |
| KSD30H36363 | 36"L | | |
| KSD30H36483 | 48"L | | |

Cupboard and Drawer Cabinets



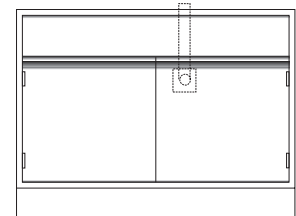
- | | | | |
|--------------------|------|--------------------|------|
| KSE40H36183 | 18"L | KSE41H36363 | 36"L |
| KSE40H36243 | 24"L | KSE41H36483 | 48"L |

Corner Cabinets



- KSG15H36153**
- Corner Cabinet Dimensions Corner Cabinet is supplied with lazy susan

Acid Storage Base Cabinets



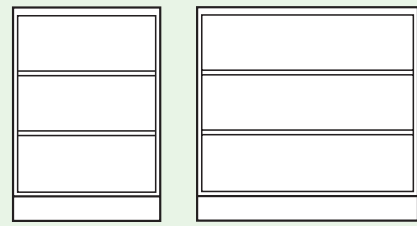
- | | |
|--------------------|------|
| KSE41H36363 | 36"L |
| KSE41H36483 | 48"L |

Sink Cabinets

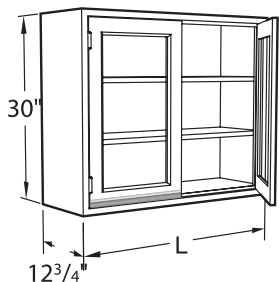


- | | | | | | |
|--------------------|------|--------------------|------|--------------------|------|
| KSG00H36243 | 24"L | KSG00H36363 | 36"L | KSG00H36363 | 36"L |
| | | KSG00H36483 | 48"L | KSG00H36483 | 48"L |

Open Storage Cabinets Standing Height



- | | | | |
|--------------------|------|--------------------|------|
| KSB00H36183 | 18"L | KSB00H36303 | 30"L |
| KSB00H36243 | 24"L | KSB00H36363 | 36"L |
| | | KSB00H36483 | 48"L |



Wall Mounted Storage Cabinets

Products on this page are made to order, shipped fully KD, and are designed for installed projects.

- Wall cabinets are 30" high and a nominal 12³/₄" deep. Lengths as shown.
- Wall cabinets have two adjustable shelves.
- Other depths and heights available
- Stain color is Fawn Oak

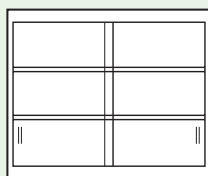
Open Storage



KSW00H30183 18"L	KSW00H30303 30"L
KSW00H30243 24"L	KSW00H30363 36"L
	KSW00H30483 48"L

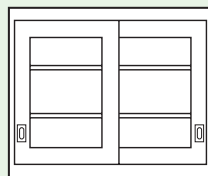
Sliding

Plate Glass



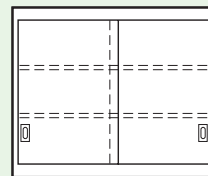
KSW10H30303 30"L
KSW10H30363 36"L
KSW10H30483 48"L

Glazed Doors



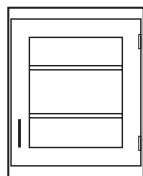
KSW11H30303 30"L
KSW11H30363 36"L
KSW11H30483 48"L

Panel Doors

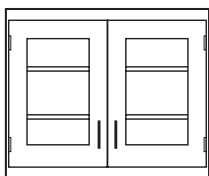


KSW12H30303 30"L
KSW12H30363 36"L
KSW12H30483 48"L

Swinging Glazed Doors

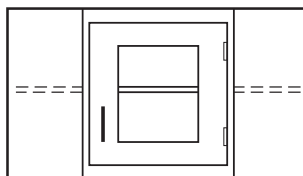


KSW20H30183 18"L
KSW20H30243 24"L

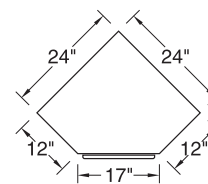


KSW20H30303 30"L
KSW20H30363 36"L
KSW20H30483 48"L

Corner Cabinets

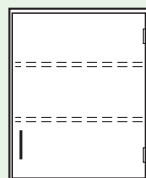


KSW21H30173

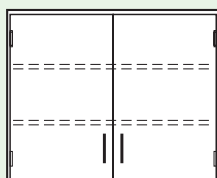


Plan View

Swinging Panel Doors

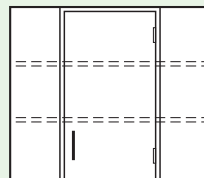


KSW25H30183 18"L
KSW25H30243 24"L

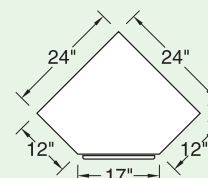


KSW25H30363 36"L
KSW25H30483 48"L

Corner Cabinets



KSW26H30173



Plan View